

Smart City Signals IoT Traffic Signal Panel

The IoT Traffic Signal Panel modernizes any existing traffic signal cabinet with Ethernet communications capabilities allowing for two-way communications to the Cloud for the introduction of new mobile app or GPS based detection solutions.

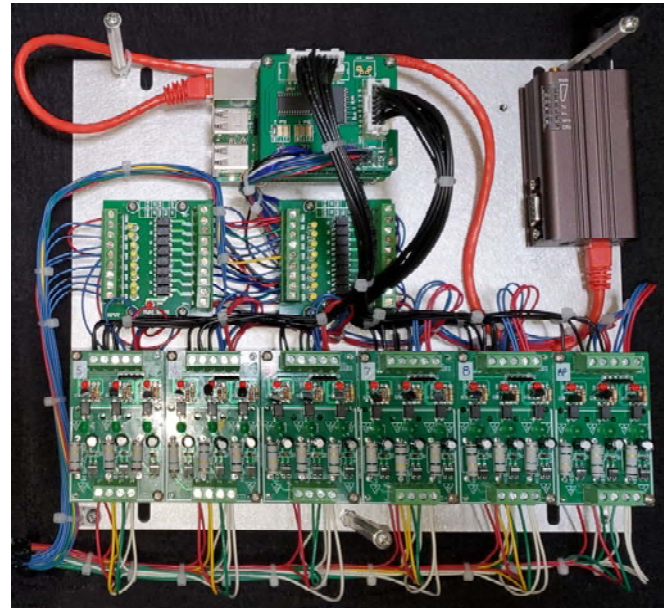
Within the cabinet the panel scans the traffic signal field inputs and load bay outputs to capture:

- | | |
|-----------|---------------------------|
| Traffic | • Red |
| Signal | • Yellow |
| Status | • Green |
| | • Walk |
| | • Don't Walk |
| Detection | • Vehicle Loops |
| Status | • Pedestrian Push Buttons |
| Alarms | • Conflict Flash |
| | • Police Flash |
| | • Door Open |
| | • Railroad Preempt |
| | • Communication Status |
| | • UPS/BBS |

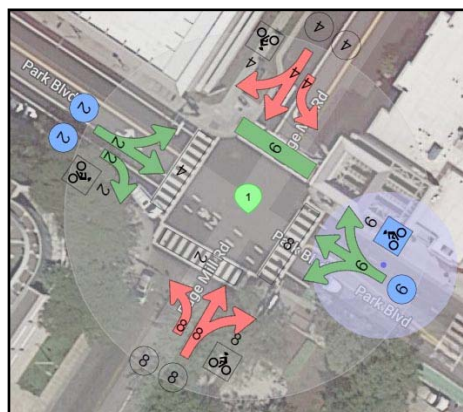
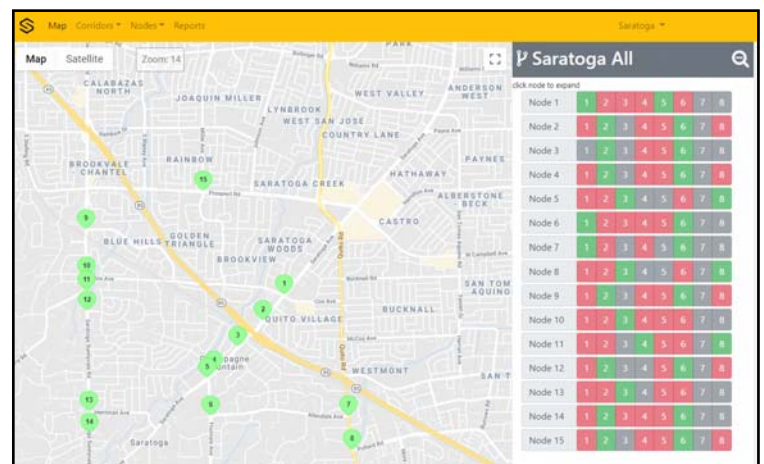
The IoT Traffic Signal can operate within any NEMA or 300-series traffic signal cabinet and is agnostic to the traffic signal controller and traffic signal cabinet manufacturer.

Cloud-based detection opportunities include:

- Bicycle Detection
- Scooter Detection
- Pedestrian Push Button Actuation
- Emergency Vehicle Presence
- Transit Vehicle Priority
- Advanced Rail Notification



Smart City Signals Cloud-Based User Interface



Manage your traffic signal and ITS assets through the Smart City Signals Cloud Platform.

Smart City Signals
6701 Koll Center Parkway
Suite 250
Pleasanton, CA 94566
(408) 916-8141